



*Green Valley Village
Park Frontage South Elevations
Designed By: Orrin Thiessen*

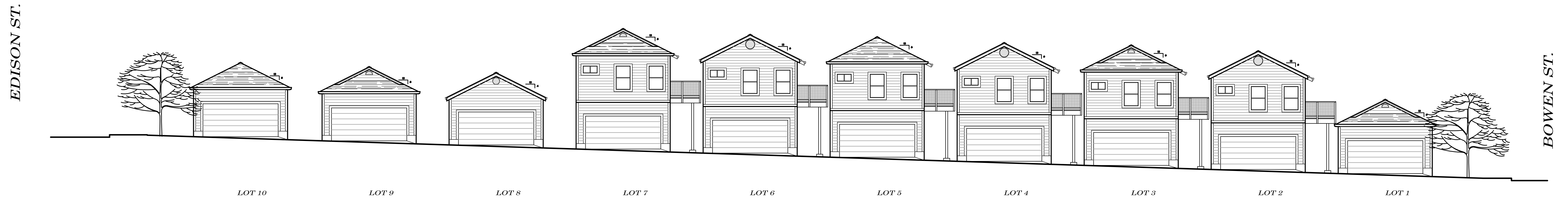
SCALE 3/32"=1'-0"
11.08.2017



*Green Valley Village
Bowen St. Frontage West Elevation
Designed By: Orrin Thiessen*



*Green Valley Village
Edison St. Frontage East Elevation
Designed By: Orrin Thiessen*



*Green Valley Village
Alley Frontage North Elevations
Designed By: Orrin Thiessen*

SCALE 3/32"=1'-0"
11.08.2017

BOWEN ST.



LOT 1

LOT 2

LOT 3

LOT 4

LOT 5



LOT 6

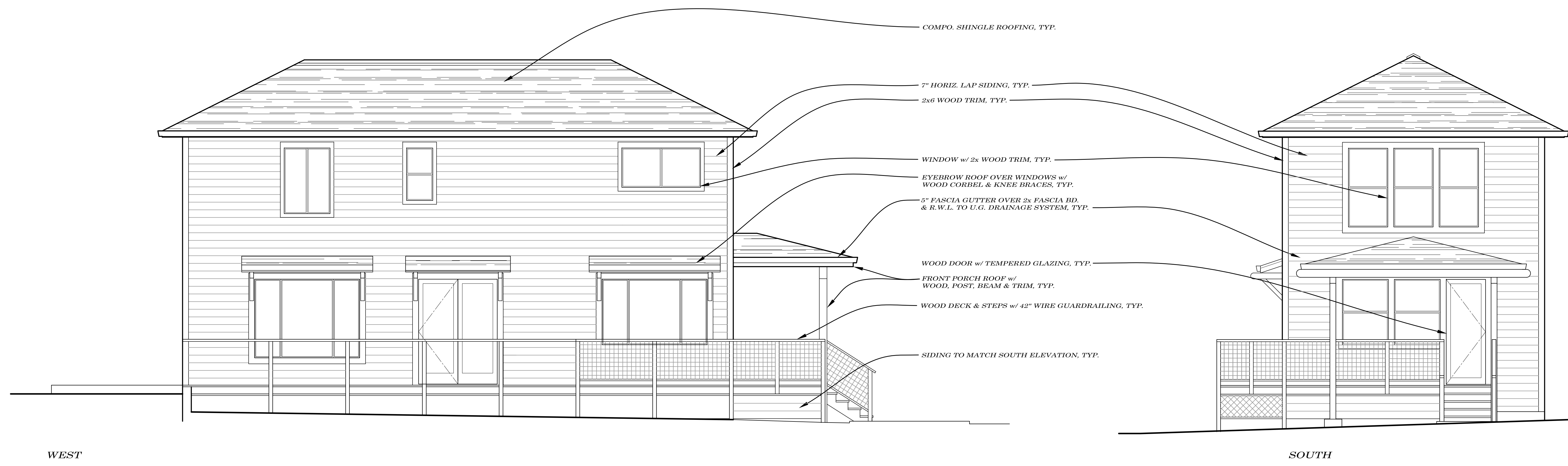
LOT 7

LOT 8

LOT 9

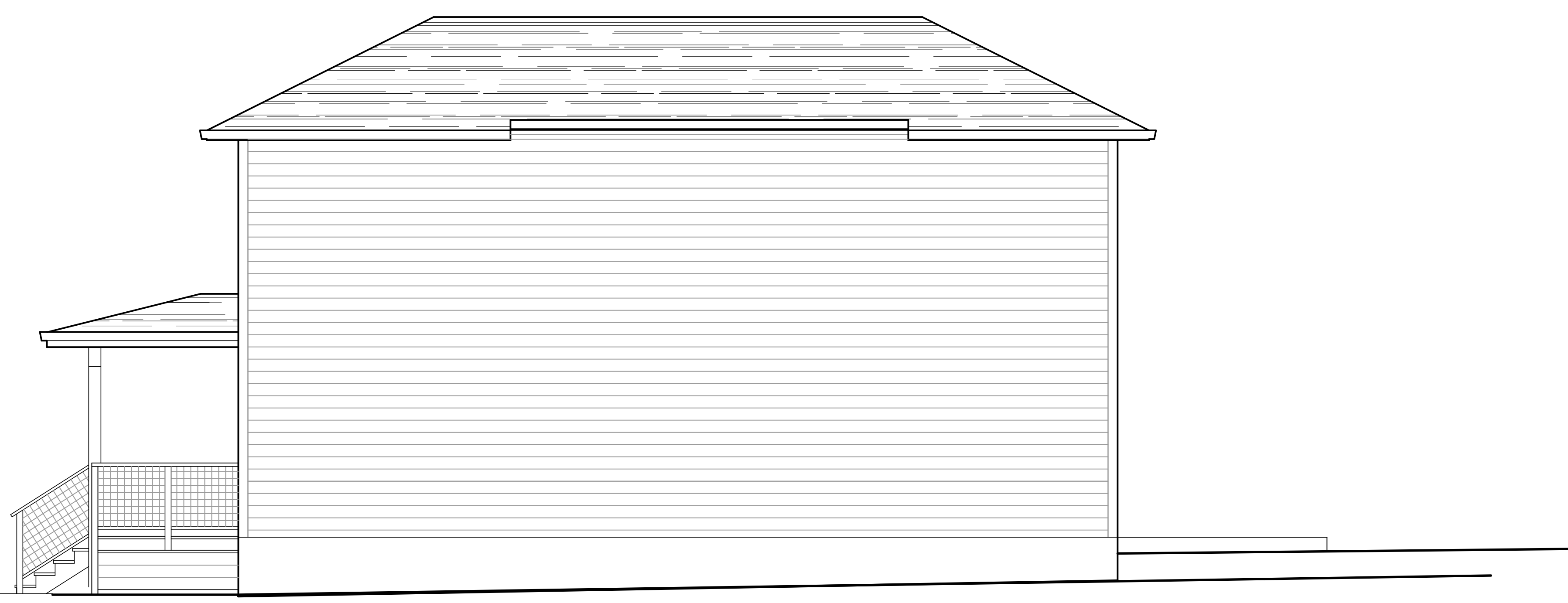
LOT 10

EDISON ST.



WEST

SOUTH



EAST



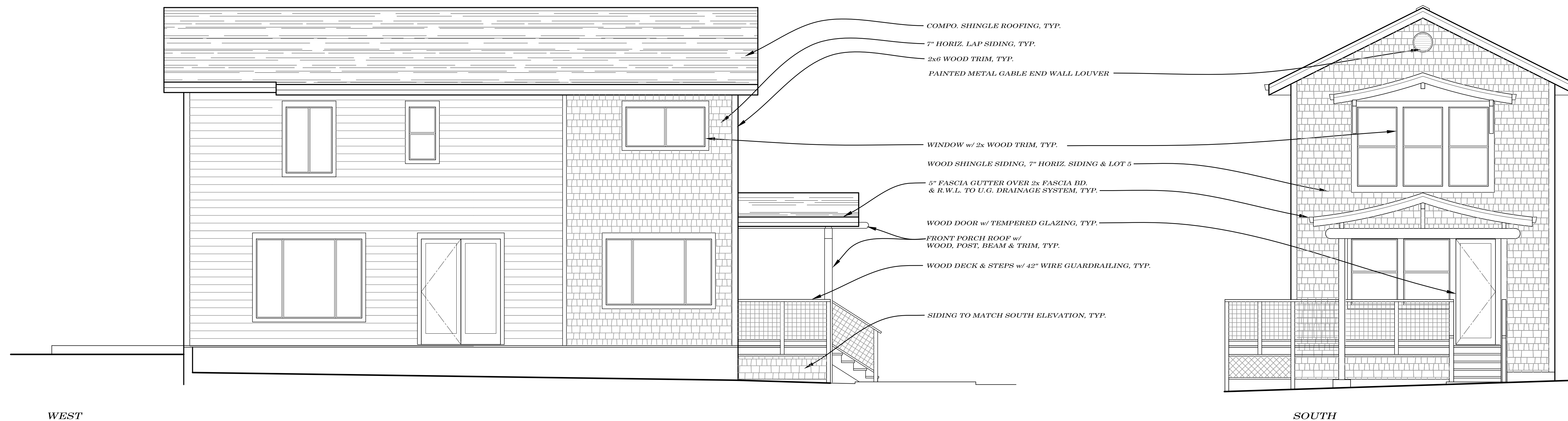
NORTH

Green Valley Village - Color Chart
 All paint colors are "Kelly-Moore"
 Trim colors are same as Body color

- Body Color = Glen Ivy
- Roof & Deck Trim = Bayou Mistery
- Window Frame Color = Bronze
- Roofing Color = Birchwood

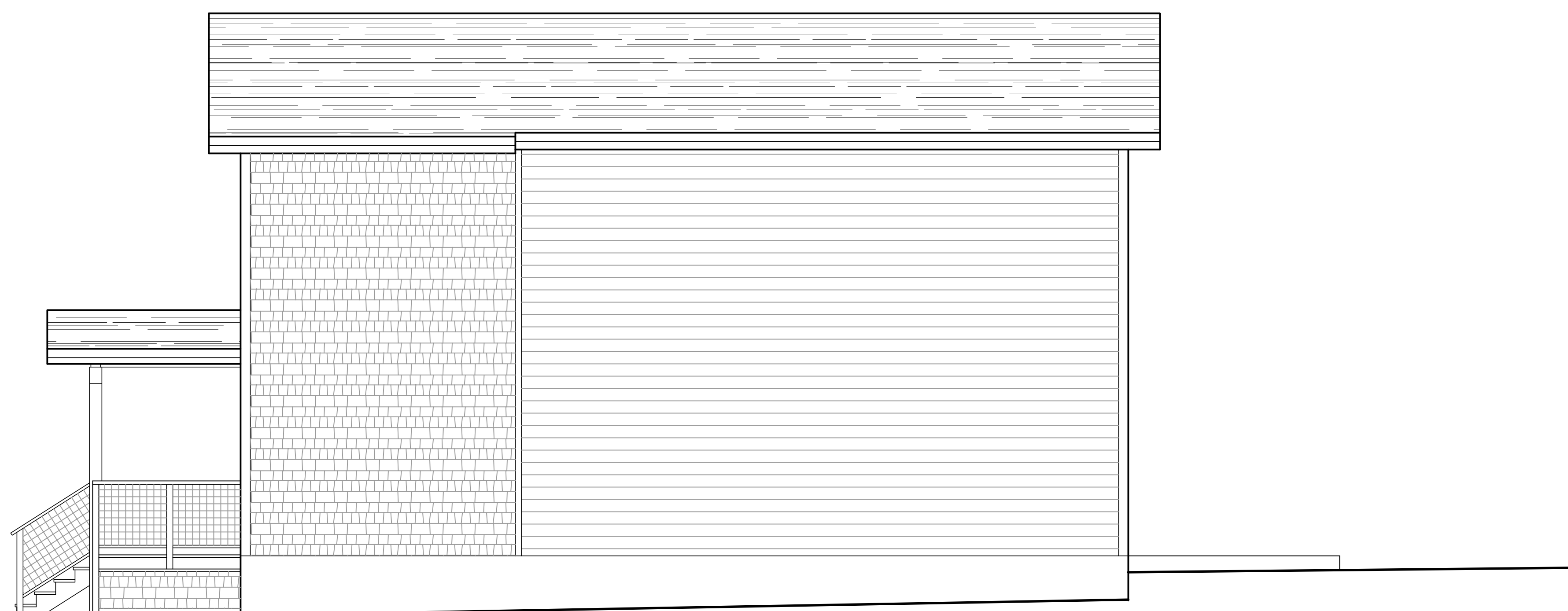
Green Valley Village
 Residence Elevations
 @ Lot 1
 Designed By: Orrin Thiessen

SCALE 1/4"=1'-0"
 11.08.2017



WEST

SOUTH



EAST

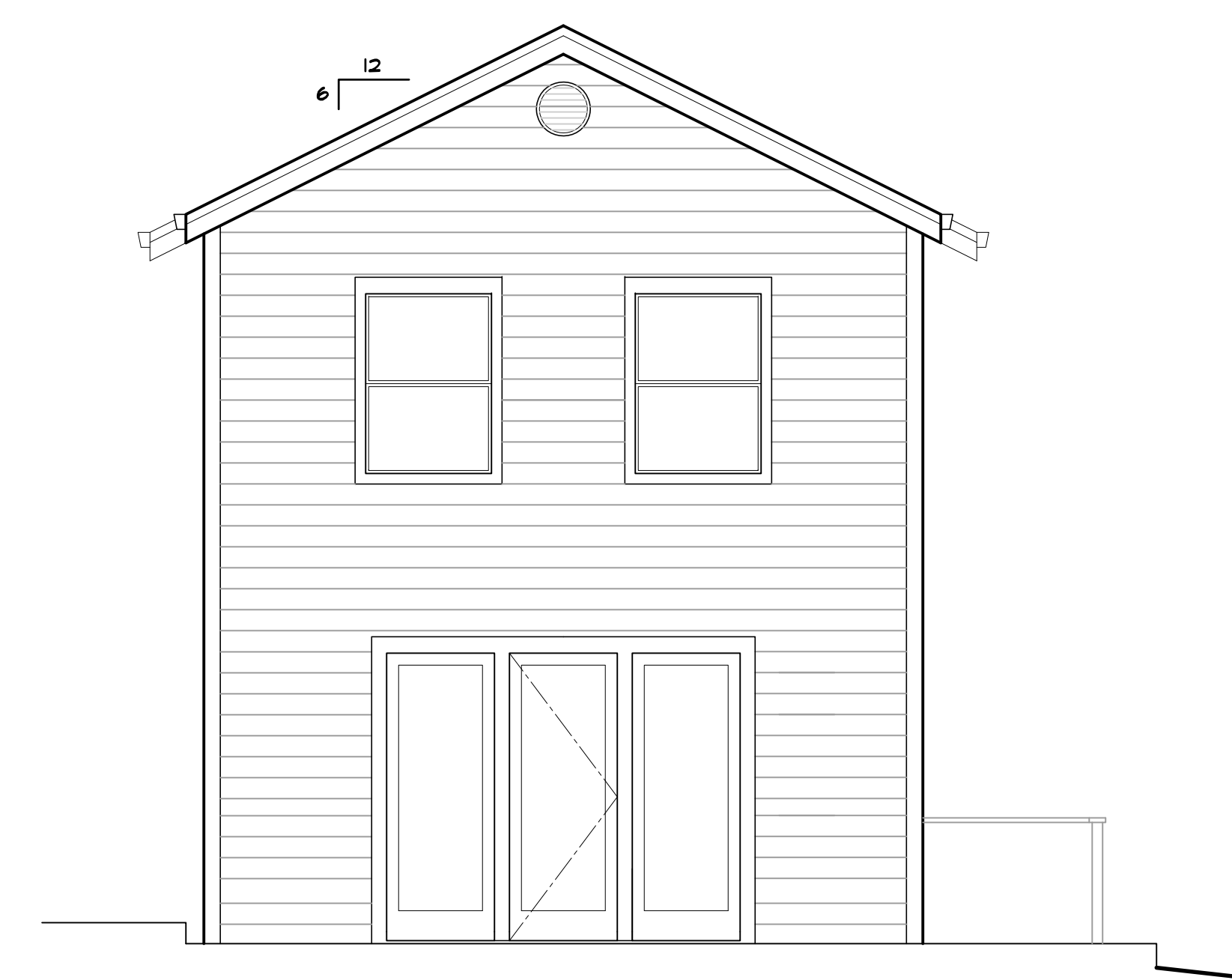
Green Valley Village
Residence Elevations
@ Lot 2, 4, 6, & 8
Designed By: Orrin Thiessen

Green Valley Village - Color Chart - Lots 2, 6 & 8
All paint colors are "Kelly-Moore"
Trim colors are same as Body color

Body Color	= Old Brick
Roof & Deck Trim	= Soul of the Earth
Window Frame Color	= Bronze
Roofing Color	= Copper Canyon

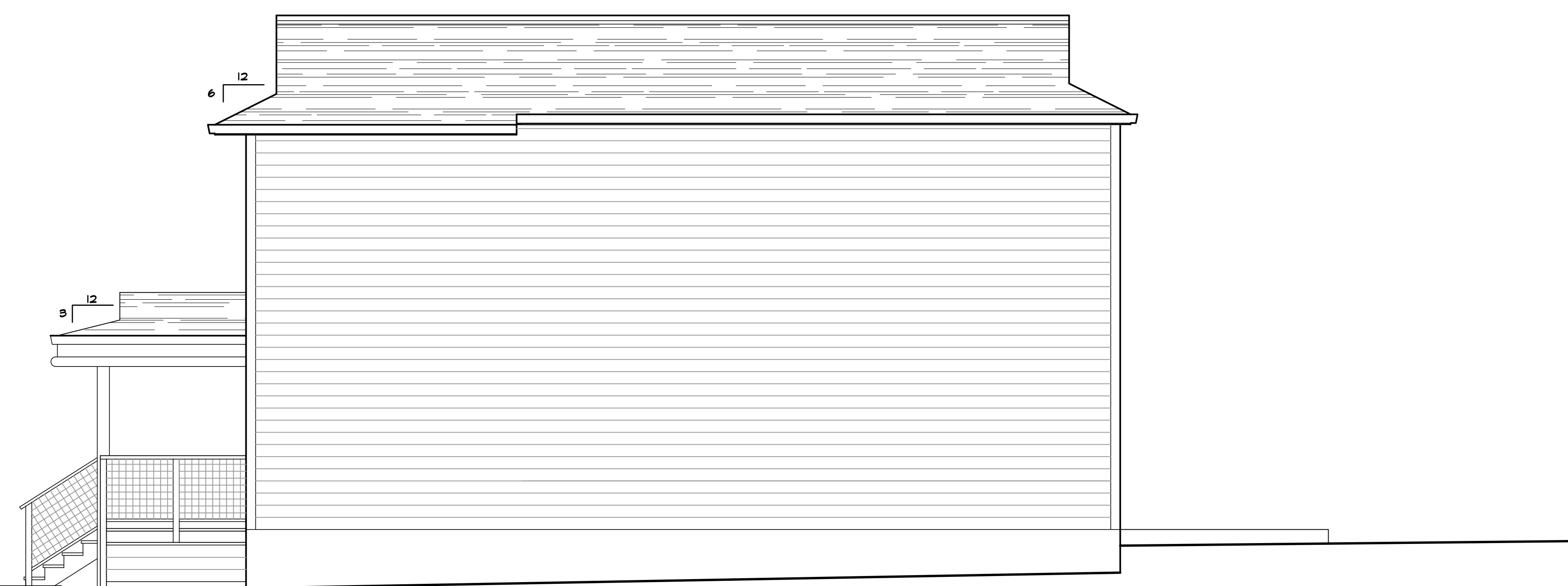
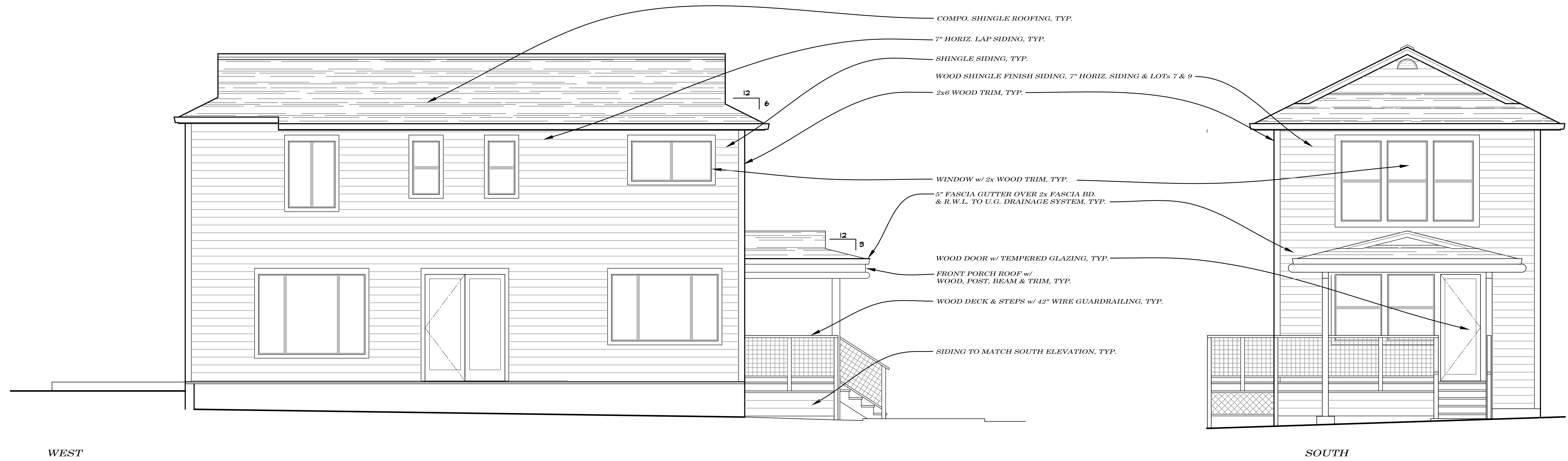
Green Valley Village - Color Chart - Lot 4
All paint colors are "Kelly-Moore"
Trim colors are same as Body color

Body Color	= Glen Ivy
Roof & Deck Trim	= Bayou Mistery
Window Frame Color	= Bronze
Roofing Color	= Birchwood



NORTH

SCALE 1/4"=1'-0"
11.08.2017



Green Valley Village - Color Chart - Lots 3 & 9
 All paint colors are "Kelly-Moore"
 Trim colors are same as Body color

Body Color	= Windsor Yellow
Roof & Deck Trim	= Old Brick
Window Frame Color	= Ivory
Roofing Color	= Golden Amber

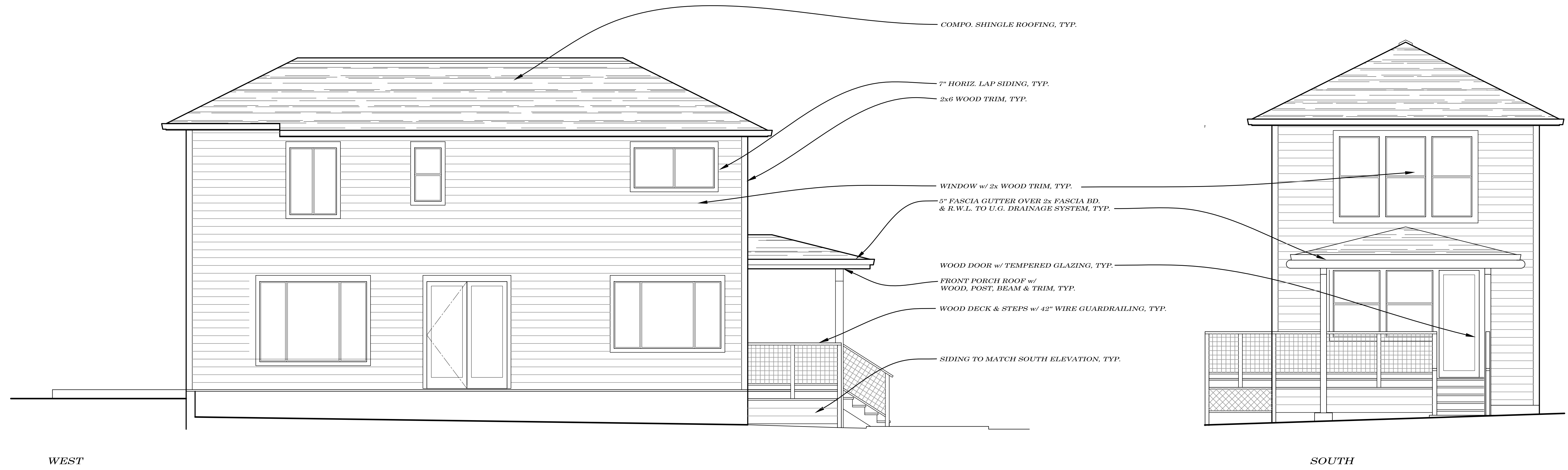
Green Valley Village - Color Chart - Lot 7
 All paint colors are "Kelly-Moore"
 Trim colors are same as Body color

Body Color	= Glen Ivy
Roof & Deck Trim	= Bayou Mistery
Window Frame Color	= Bronze
Roofing Color	= Birchwood

*Green Valley Village
 Residence Elevations
 @ Lot 3, 7 & 9
 Designed By: Orrin Thiessen*

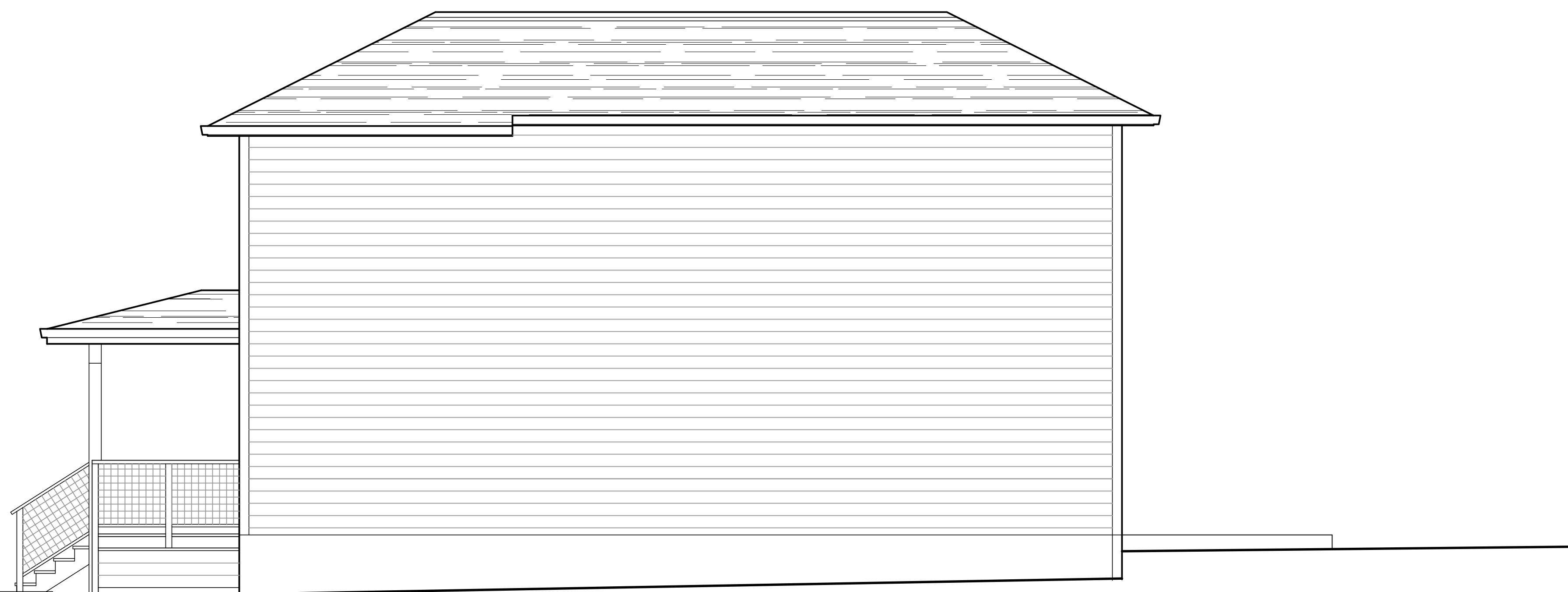
NORTH

SCALE 1/4"=1'-0"
 11.08.2017



WEST

SOUTH

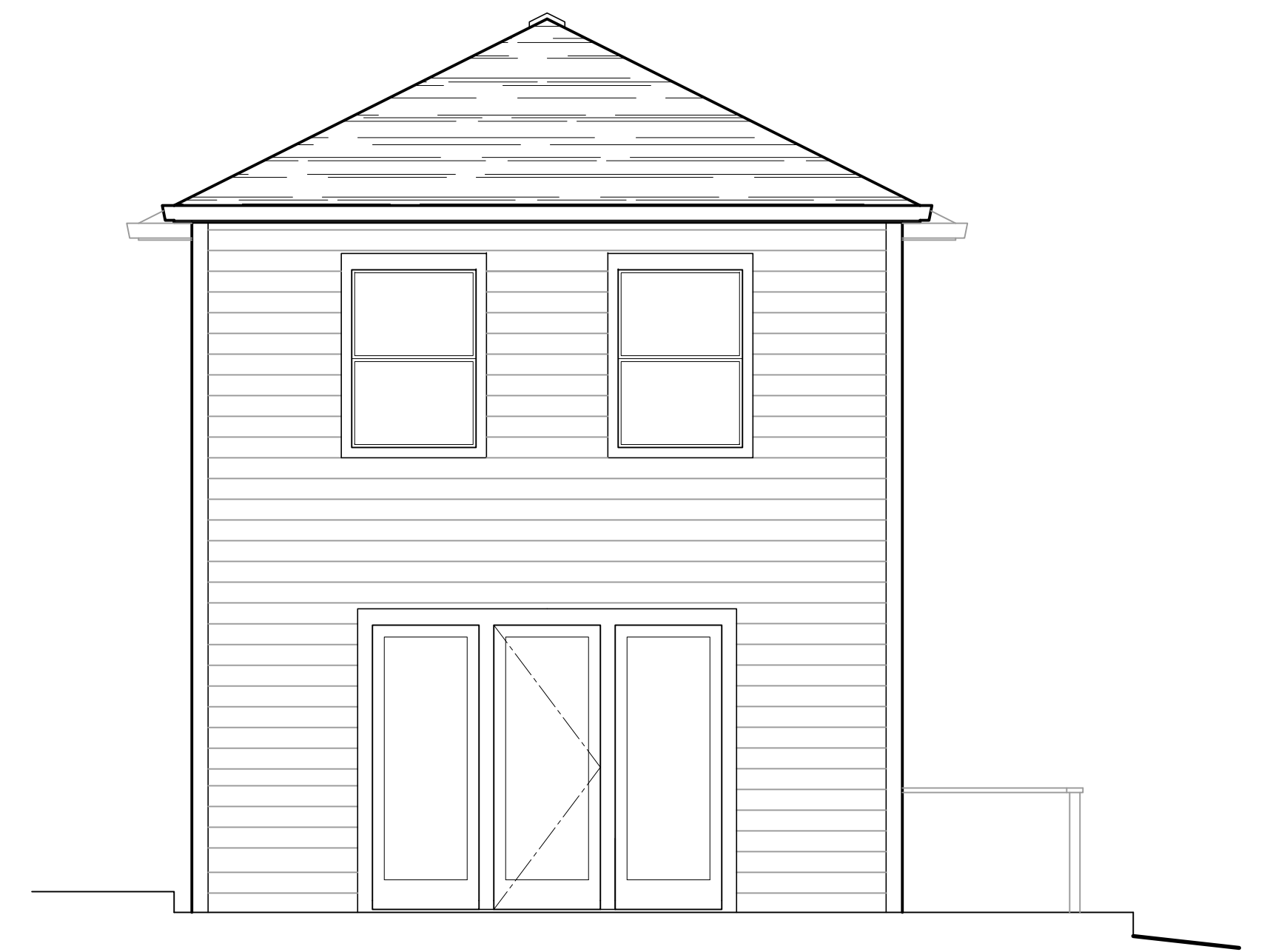


EAST

Green Valley Village
Residence Elevations
@ Lot 5
Designed By: Orrin Thiessen

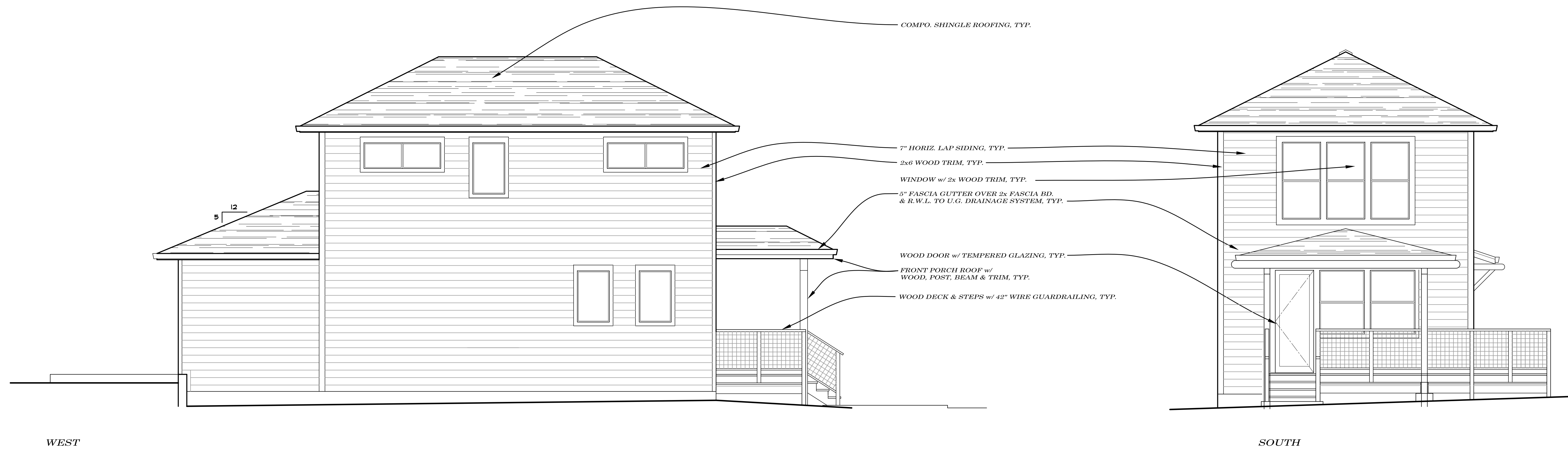
Green Valley Village - Color Chart
All paint colors are "Kelly-Moore"
Trim colors are same as Body color

Body Color	= Windsor Yellow
Roof & Deck Trim	= Old Brick
Window Frame Color	= Ivory
Roofing Color	= Golden Amber



NORTH

SCALE 1/4"=1'-0"
11.08.2017

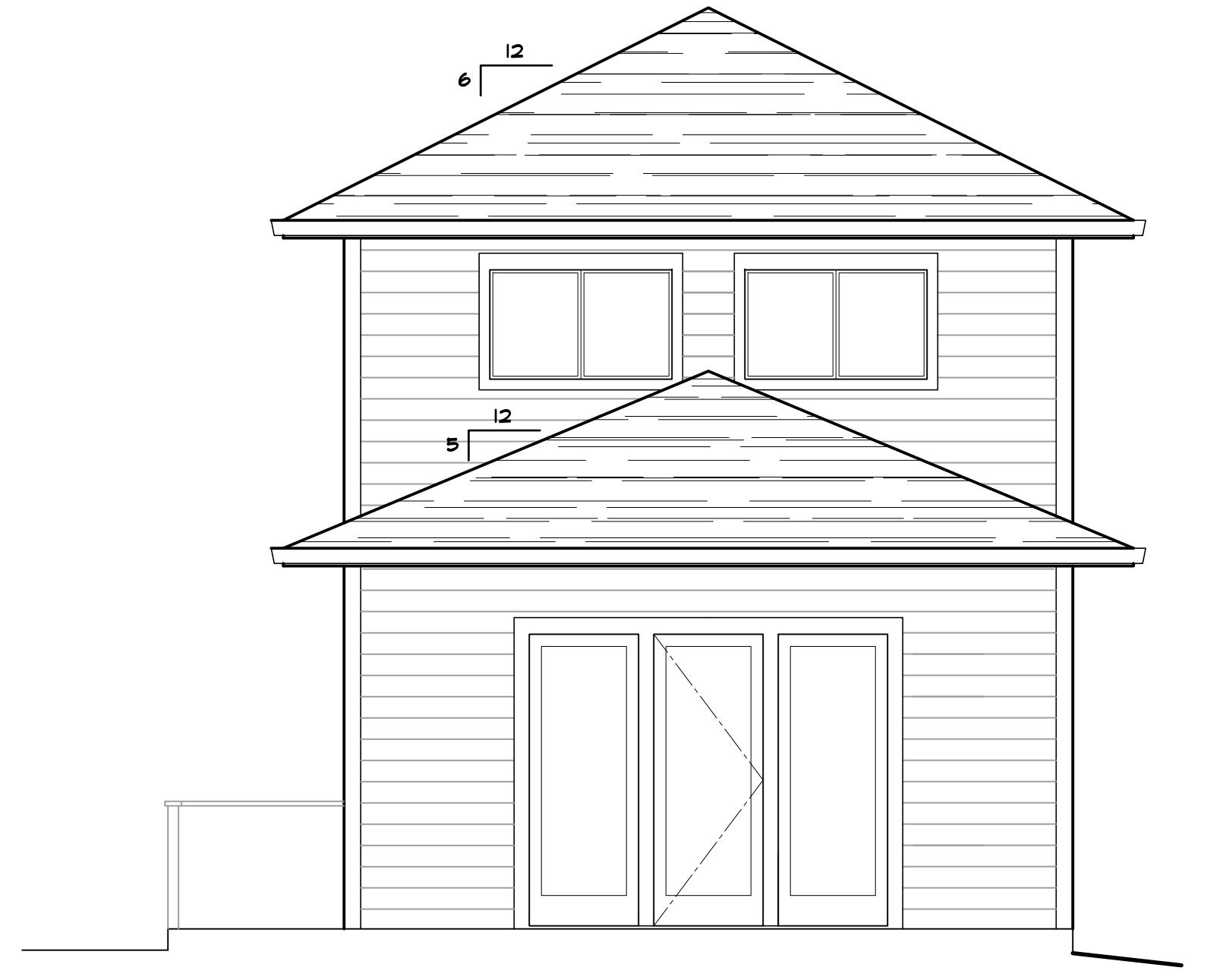


WEST

SOUTH



EAST



NORTH

Green Valley Village - Color Chart
 All paint colors are "Kelly-Moore"
 Trim colors are same as Body color

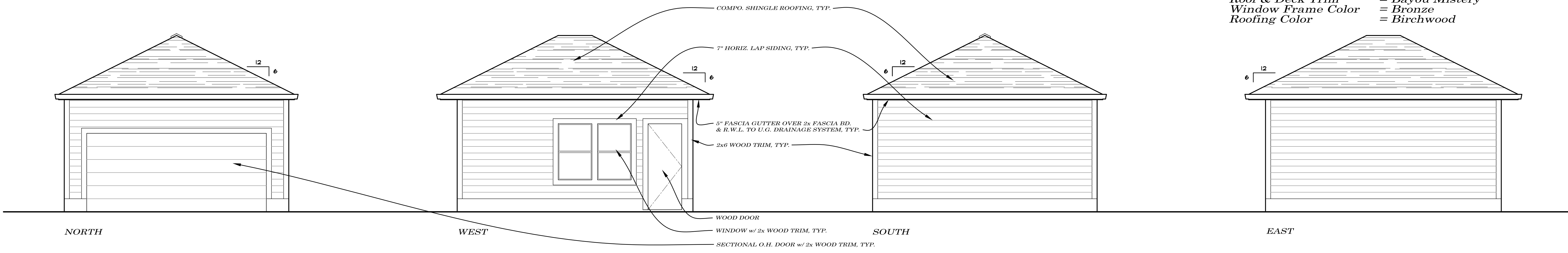
Body Color	=	Glen Ivy
Roof & Deck Trim	=	Bayou Mistery
Window Frame Color	=	Bronze
Roofing Color	=	Birchwood

Green Valley Village
 Residence Elevations
 @ Lot 10
 Designed By: Orrin Thiessen

SCALE 1/4"=1'-0"
 11.08.2017

Green Valley Village - Color Chart - Lot 10
 All paint colors are "Kelly-Moore"
 Trim colors are same as Body color

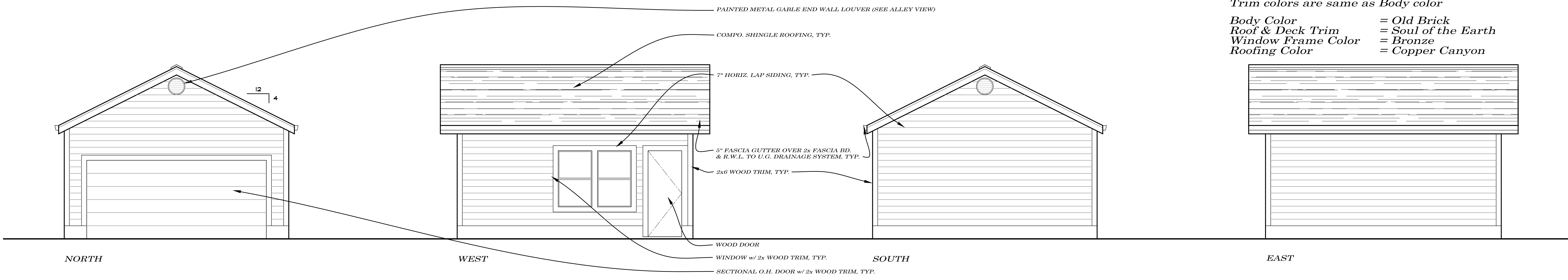
Body Color = Glen Ivy
 Roof & Deck Trim = Bayou Mistery
 Window Frame Color = Bronze
 Roofing Color = Birchwood



Green Valley Village
 Garage Elevations
 @ Lot 10
 Designed By: Orrin Thiessen

Green Valley Village - Color Chart - Lots 2, 6 & 8
 All paint colors are "Kelly-Moore"
 Trim colors are same as Body color

Body Color = Old Brick
 Roof & Deck Trim = Soul of the Earth
 Window Frame Color = Bronze
 Roofing Color = Copper Canyon



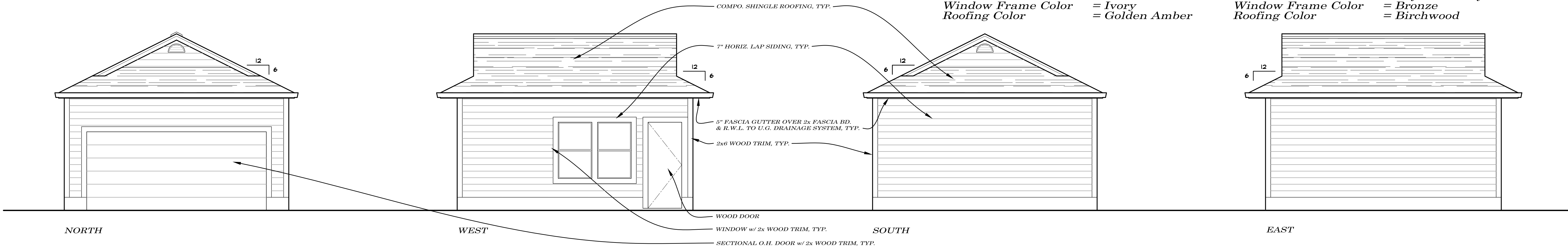
Green Valley Village
 Garage Elevations
 @ Lot 8
 Designed By: Orrin Thiessen

Green Valley Village - Color Chart - Lot 9
 All paint colors are "Kelly-Moore"
 Trim colors are same as Body color

Body Color = Windsor Yellow
 Roof & Deck Trim = Old Brick
 Window Frame Color = Ivory
 Roofing Color = Golden Amber

Green Valley Village - Color Chart - Lot 1
 All paint colors are "Kelly-Moore"
 Trim colors are same as Body color

Body Color = Glen Ivy
 Roof & Deck Trim = Bayou Mistery
 Window Frame Color = Bronze
 Roofing Color = Birchwood



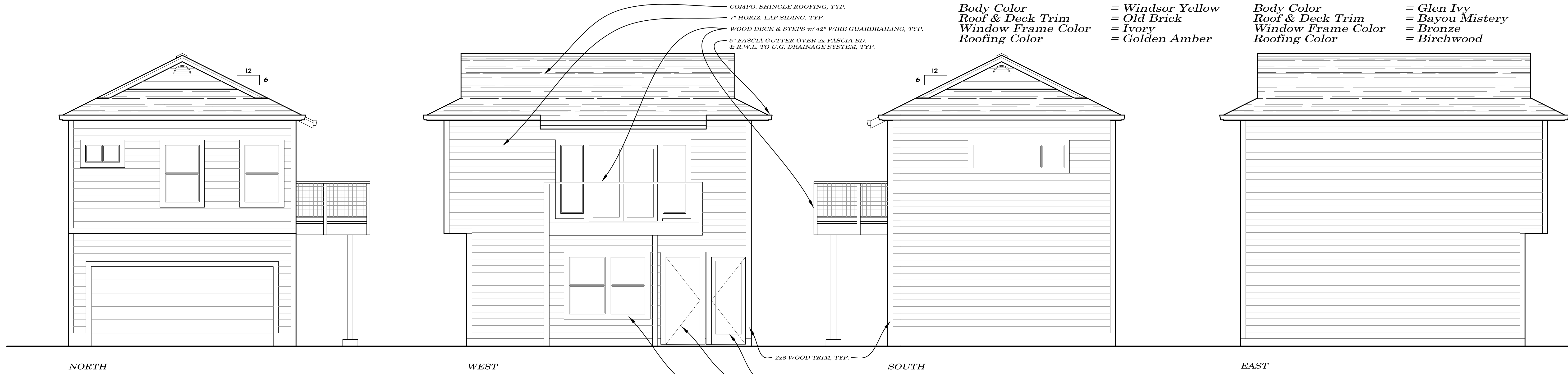
Green Valley Village
 Garage Elevations
 @ Lots 1 & 9
 Designed By: Orrin Thiessen

Green Valley Village - Color Chart - Lot 3
 All paint colors are "Kelly-Moore"
 Trim colors are same as Body color

Body Color = Windsor Yellow
 Roof & Deck Trim = Old Brick
 Window Frame Color = Ivory
 Roofing Color = Golden Amber

Green Valley Village - Color Chart - Lot 7
 All paint colors are "Kelly-Moore"
 Trim colors are same as Body color

Body Color = Glen Ivy
 Roof & Deck Trim = Bayou Mistery
 Window Frame Color = Bronze
 Roofing Color = Birchwood



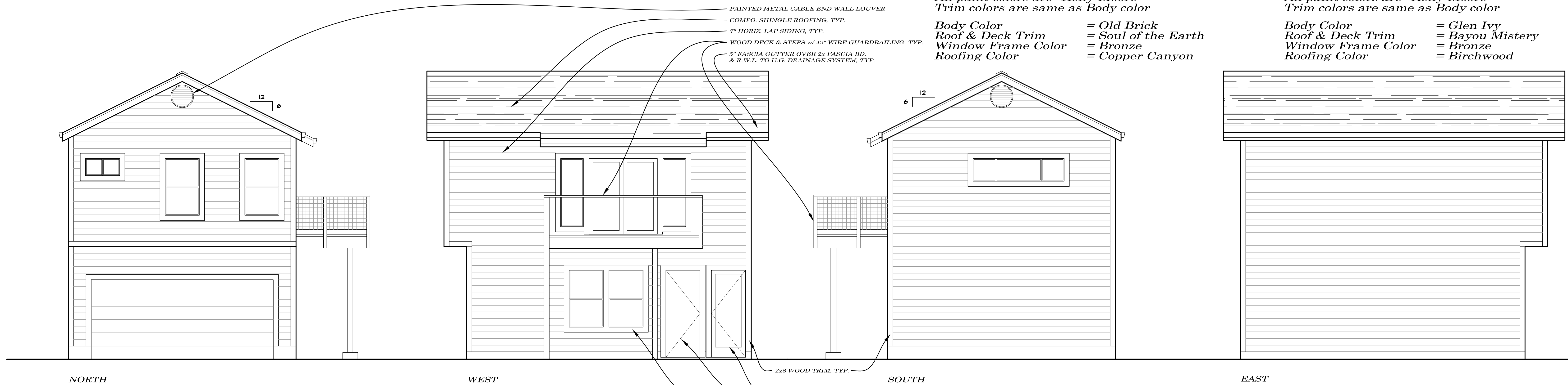
Green Valley Village
 Second Unit over Garage Elevations
 @ Lots 3 & 7
 Designed By: Orrin Thiessen

Green Valley Village - Color Chart - Lots 2 & 6
 All paint colors are "Kelly-Moore"
 Trim colors are same as Body color

Body Color = Old Brick
 Roof & Deck Trim = Soul of the Earth
 Window Frame Color = Bronze
 Roofing Color = Copper Canyon

Green Valley Village - Color Chart - Lot 4
 All paint colors are "Kelly-Moore"
 Trim colors are same as Body color

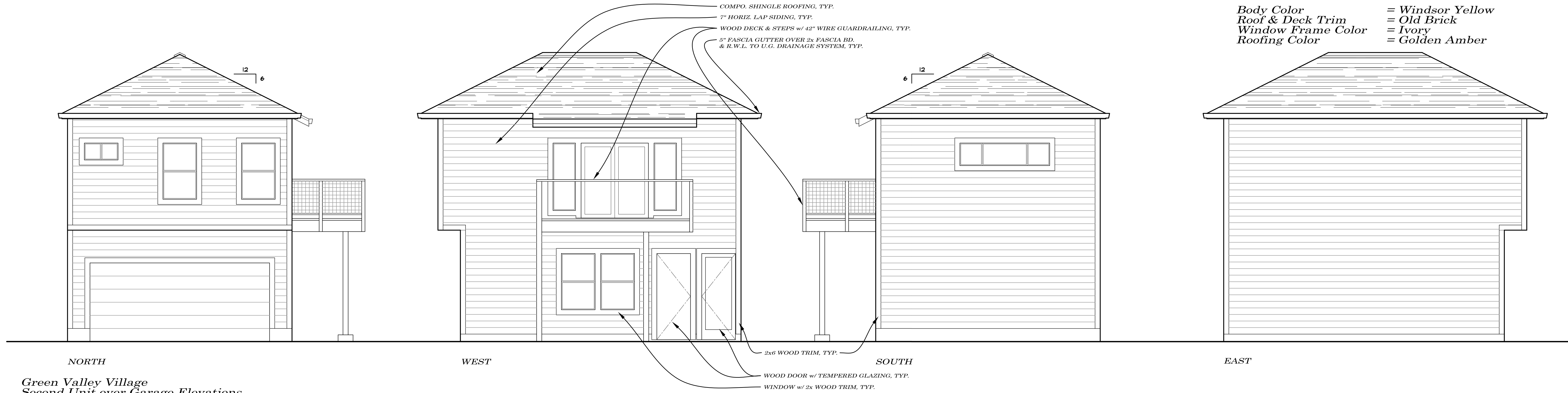
Body Color = Glen Ivy
 Roof & Deck Trim = Bayou Mistery
 Window Frame Color = Bronze
 Roofing Color = Birchwood



Green Valley Village
 Second Unit over Garage Elevations
 @ Lots 2, 4, & 6
 Designed By: Orrin Thiessen





Green Valley Village - Color Chart - Lot 5
 All paint colors are "Kelly-Moore"
 Trim colors are same as Body color

Body Color = Windsor Yellow
 Roof & Deck Trim = Old Brick
 Window Frame Color = Ivory
 Roofing Color = Golden Amber



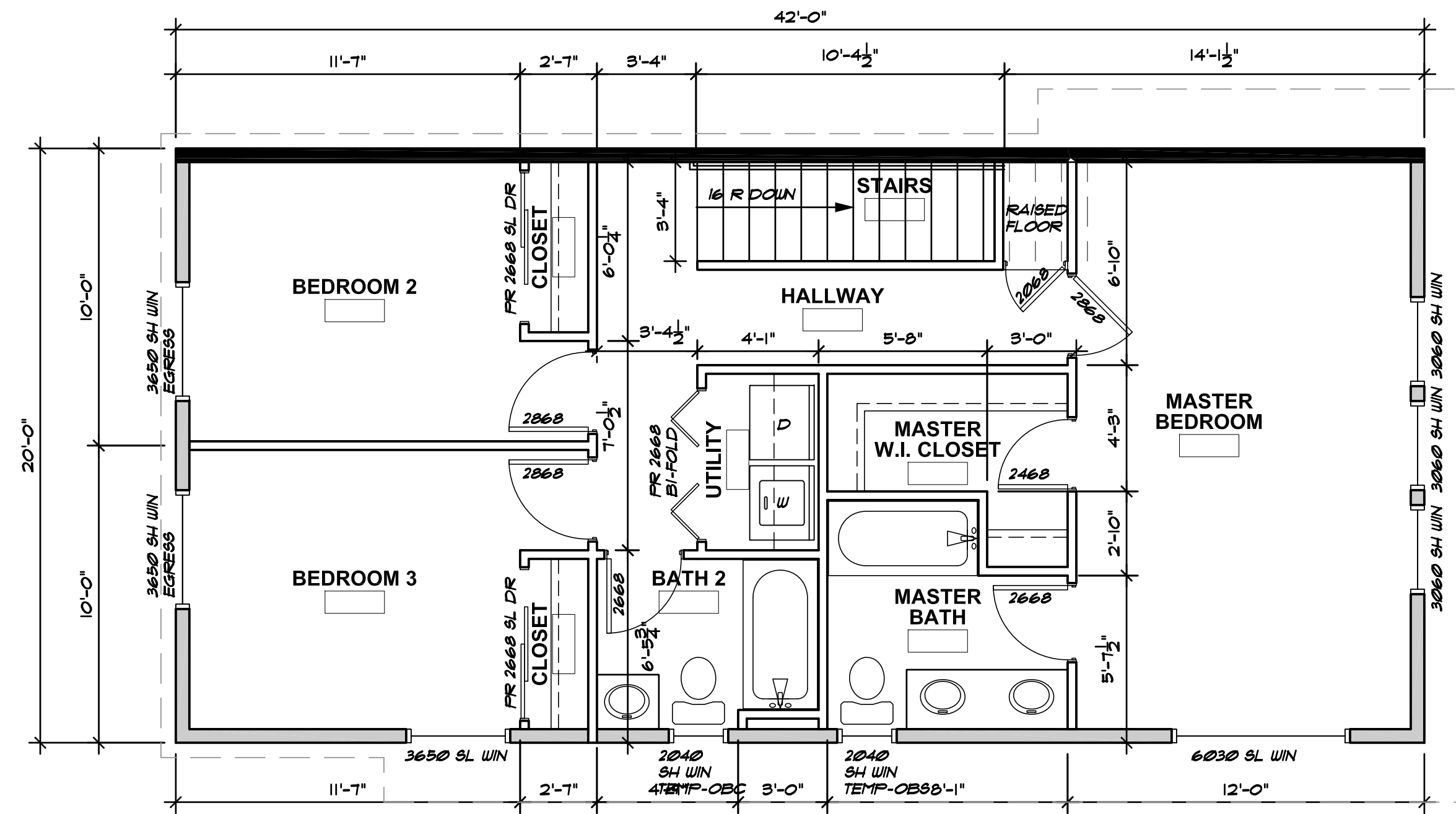
Green Valley Village
 Second Unit over Garage Elevations
 @ Lot 5
 Designed By: Orrin Thiessen

WALL LEGEND

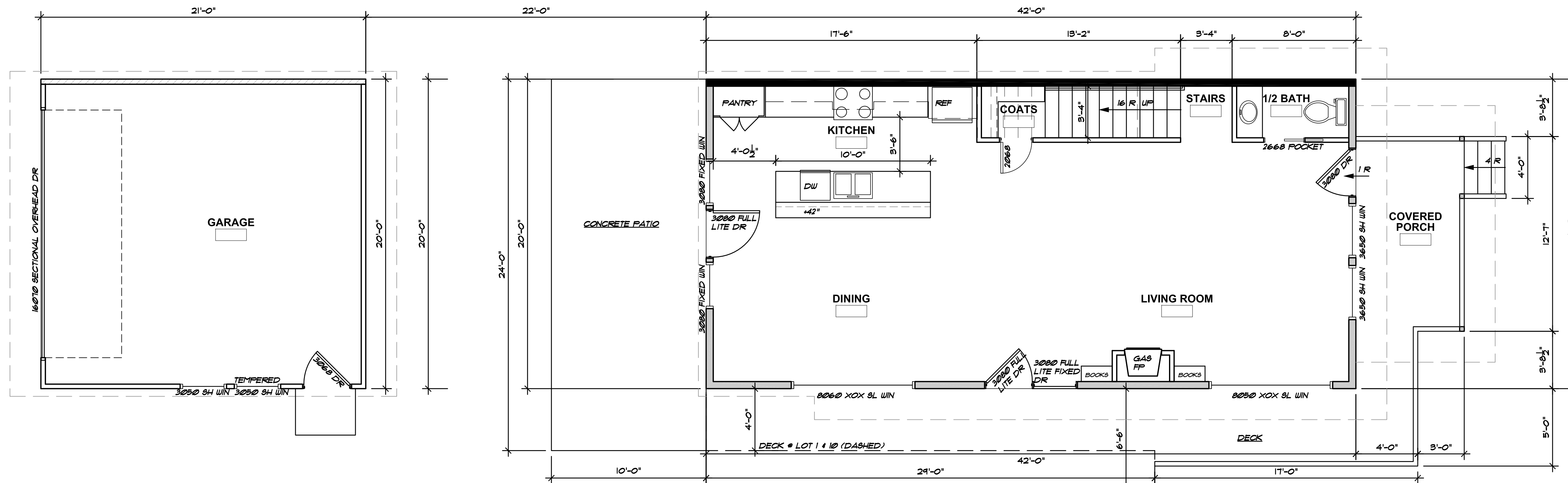
-  2x6 # 16" O.C. WOOD STUD WALL w/ R-19 F.G. BATT INSULATION # EXTERIOR WALLS
-  2x4 # 16" O.C. WOOD STUD WALL
-  2x6 # 16" O.C. WOOD STUD WALL w/ R-19 F.G. BATT INSULATION # EXTERIOR 1 HR FIRE RATED WALLS
-  2x4 # 16" O.C. WOOD STUD 1 HR FIRE RATED WALL

Building Areas of
Lots 1 & 8 (Lots 9 & 10 See Habitat for Humanity Plans)

- Primary Residence = 1655 sq. ft. (815 sq. ft. Lower Floor + 840 sq. ft. Upper Floor)
- Detached Garage = 420 sq. ft.
- Residence Covered Porch = 88 sq. ft.
- Residence Back Deck = 192 sq. ft.
- Lot 1 & 10 Front / Side Deck = 138 sq. ft.



2nd FLOOR PLAN - PRIMARY UNIT
SCALE: 1/4" = 1'-0"



1st FLOOR PLAN - PRIMARY UNIT
SCALE: 1/4" = 1'-0"

1st FLOOR PLAN - DETACHED GARAGE
SCALE: 1/4" = 1'-0"

Green Valley Village

Designed By: Orrin Thiessen

SCALE 1/4"=1'-0"

MTH DRAFTING

3808 Coffey Lane SANTA ROSA, CA 95403
(707) 953-1797
mthdrafting@sbcbglobal.net

GREEN VALLEY VILLAGE





3001 Bowen Ave. + 3000 Edison St. Graton, CA

Orrin & Terri Thiessen

Floor Plans

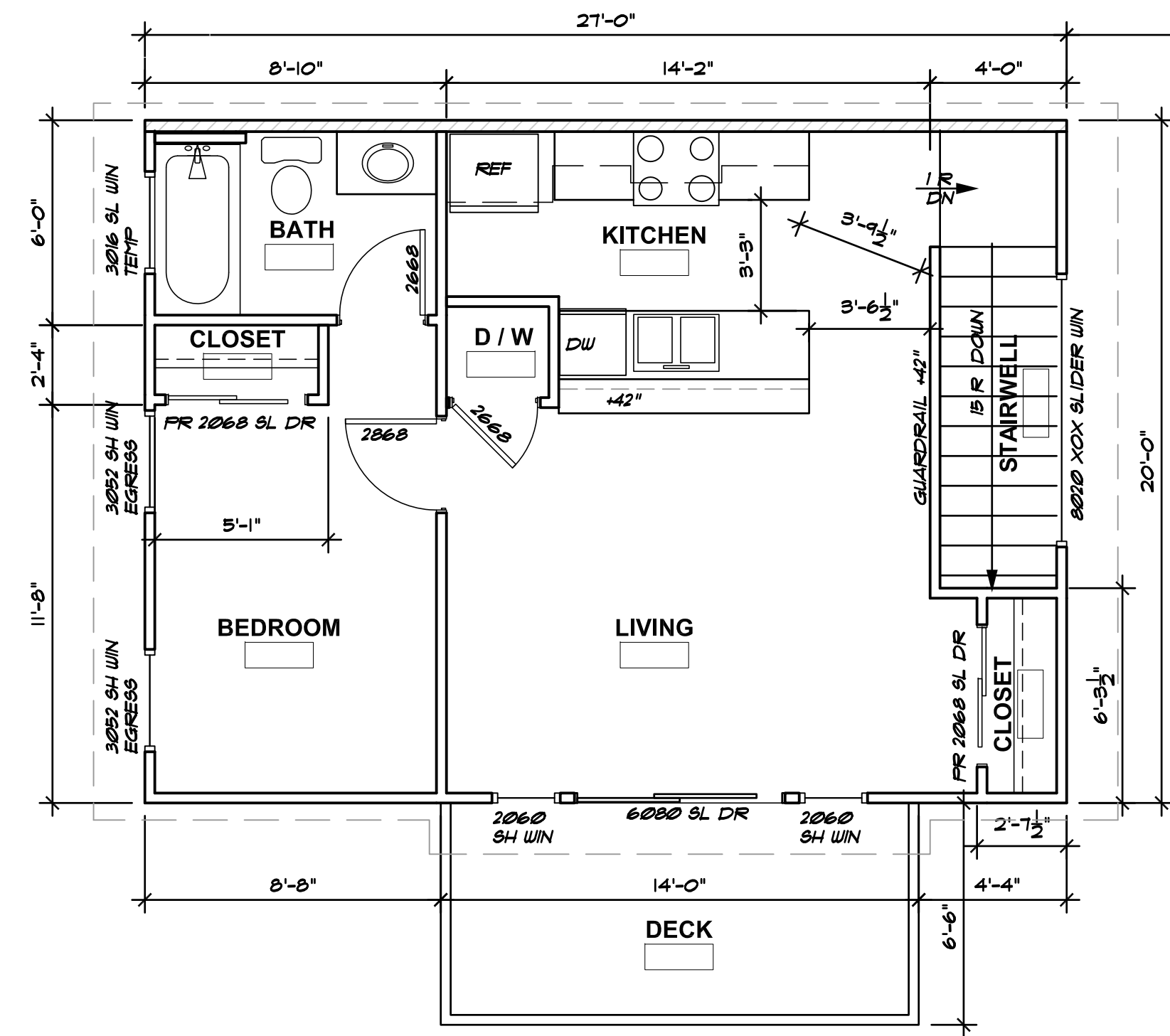
SCALE: AS SHOWN
JOB NO: 2015-15
DATE: 11/04/17
PLAN CHECK SUBMITAL
REVISIONS: 11/08/17

WALL LEGEND

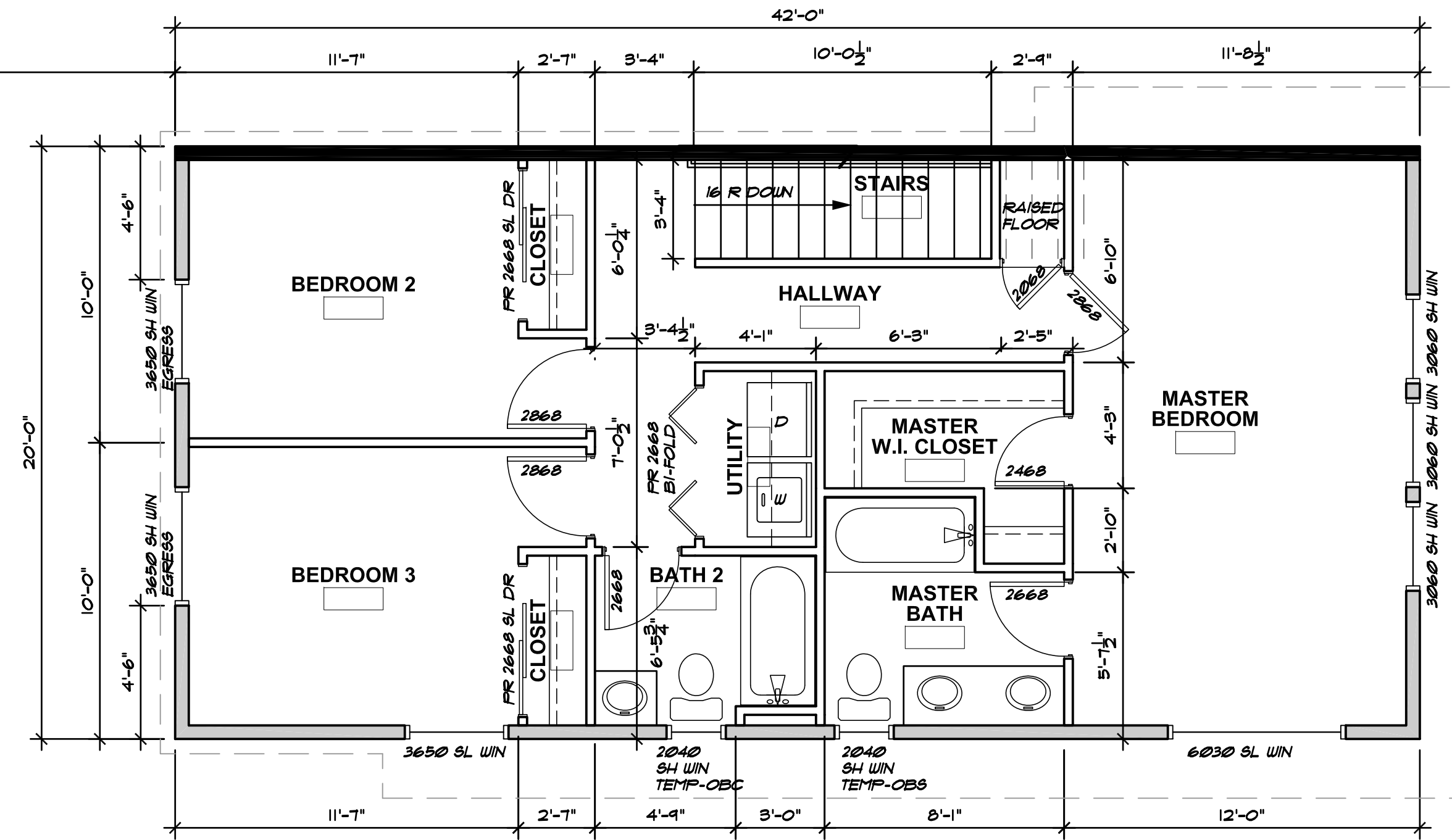
-  2x6 @ 16" O.C. WOOD STUD WALL w/ R-19 F.G. BATT INSULATION @ EXTERIOR WALLS
-  2x4 @ 16" O.C. WOOD STUD WALL
-  2x6 @ 16" O.C. WOOD STUD WALL w/ R-19 F.G. BATT INSULATION @ EXTERIOR 1 HR FIRE RATED WALLS
-  2x4 @ 16" O.C. WOOD STUD 1 HR FIRE RATED WALL

Building Areas of Lots 2, 3, 4, 5, 6 & 7

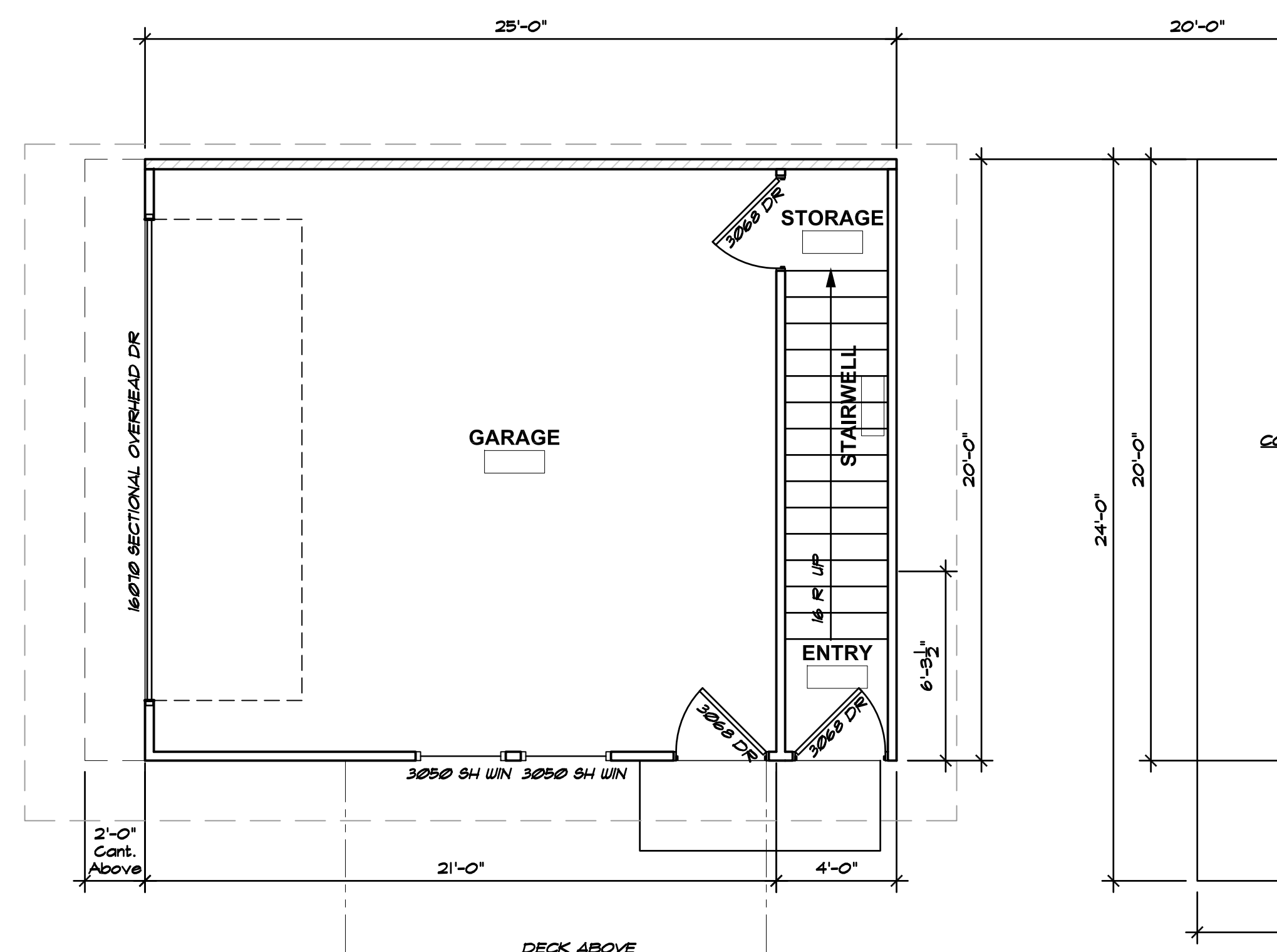
Primary Residence	= 1665 sq. ft. (815 sq. ft. Lower Floor + 840 sq. ft. Upper Floor)
Detached Garage Under ADU	= 436 sq. ft.
ADU above Garage	= 565 sq. ft. (540 sq. ft. Upper Floor + 25 sq. ft. Lower Floor)
Primary Residence Covered Porch	= 88 sq. ft.
Primary Residence Back Patio	= 192 sq. ft.
ADU Deck	= 91 sq. ft.



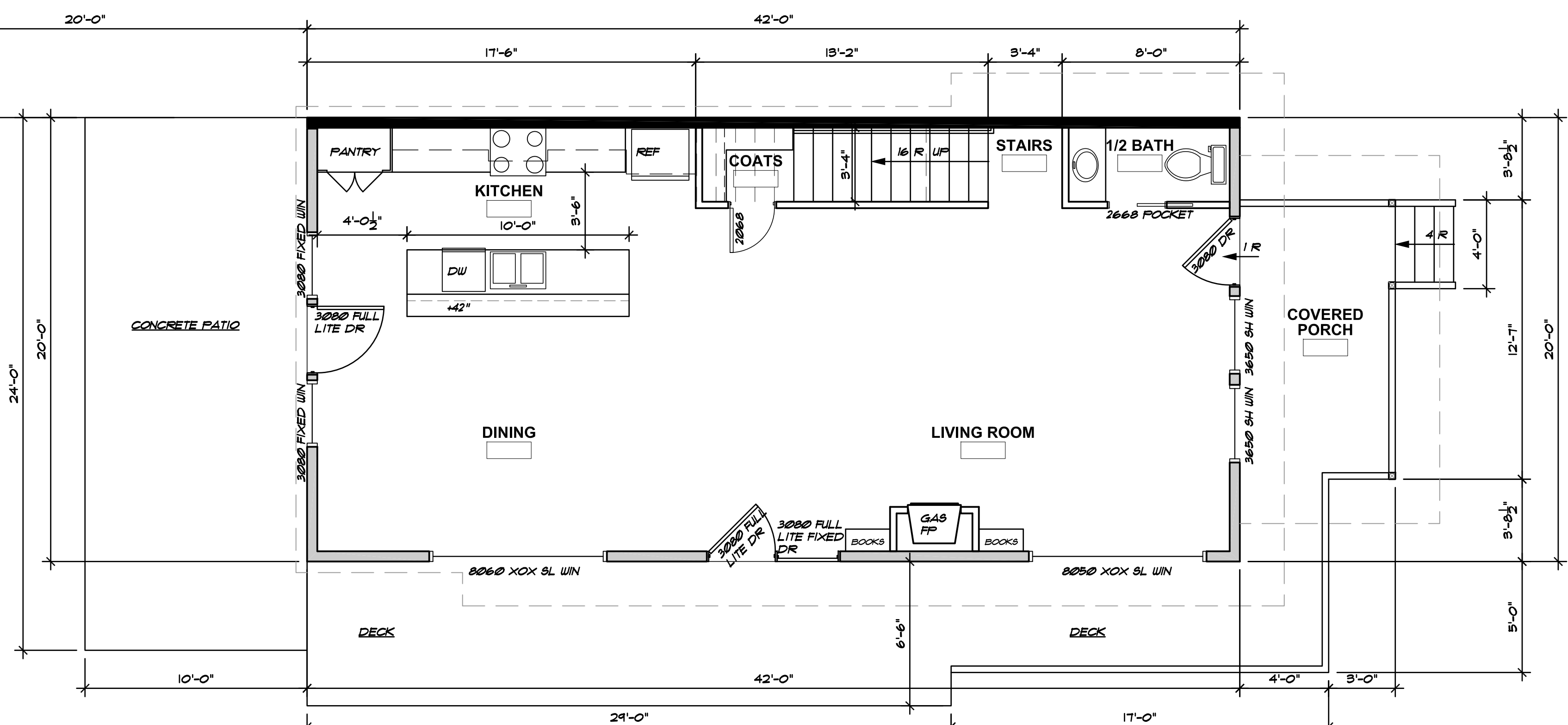
2nd FLOOR PLAN - ADU
SCALE: 1/4" = 1' - 0"



2nd FLOOR PLAN - PRIMARY UNIT
SCALE: 1/4" = 1' - 0"



1st FLOOR PLAN - DETACHED GARAGE / ADU ABOVE
SCALE: 1/4" = 1' - 0"



1st FLOOR PLAN - PRIMARY UNIT
SCALE: 1/4" = 1' - 0"

Green Valley Village

Designed By: Orrin Thiessen

SCALE 1/4"=1'-0"

MTH DRAFTING

3808 Coffey Lane SANTA ROSA, CA 95403
(707) 953-1797
mthdrafting@sbcglobal.net

GREEN VALLEY VILLAGE

3001 Bowen Ave. + 3000 Edison St. Graton, CA

Orrin & Terri Thiessen

Floor Plans-2nd Unit over Garage

SCALE: AS SHOWN
JOB NO: 2015-15
DATE: 11/04/17
PLAN CHECK SUBMITAL
REVISIONS: 11/08/17